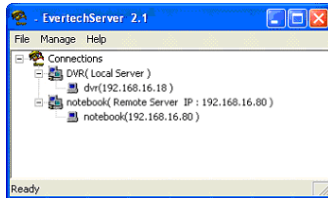


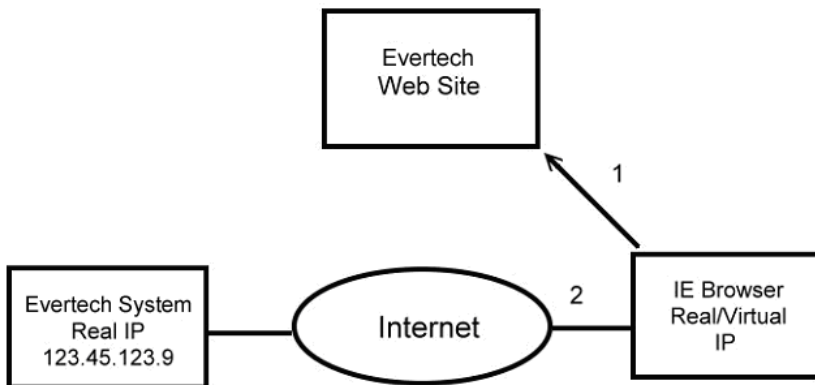


1. When 2 EvertechServer program connected, all the Evertech Host (Host A, B, C, and D) can remote monitoring each other. (Systems installed with Ev-Tech cards can be monitoring by other Evertech host. Make sure the password and login name are correct and the authorization setting)
2. When 2 EvertechServer program connected, EvertechServer will display as below, other than the name and IP of the EvertechServer Host, all the connected host's name and IP from other 2 EvertechServer can be seen. So this would finish setup of the 2 different network's EvertechServer connection.



## 9.9 Remote Monitoring through IE Browser

V2.xx had added a new Web Camera Service function. This allows all cameras on a Evertech System to be seen as Web Camera. Users can perform the remote using IE browser. Due to the special compression technique for Evertech images, please follow the following instruction to install the decoder from the Internet:



The IP address is only for reference.

1. **Evertech System setting (System that had been remote to) :**

Please activate the “Web camera service” function under the “Host” setup from the System setup.

2. **Internet IE Browser User :**

- First time using the IE WebCam function, please connect to the <http://www.ever-tec.com/English/webcam.html> website and click on the “Live Demo”. IE will then download Ev-Tech’s compression format decoder automatically before asking the user name and password. Please allow installation when a pop up window asking for installation permission. (Please take note that when installation the decoder, the internet safety setting can not be too high to avoid the pop up of installation refused window. Please lower the Internet safety level setting before installation. You can restore the high Internet safety setting after the installation. Successful decoder installation will pop up Media Player program and a “login” dialog, please type in the user name and password “demo”.
- Type in the IP address and Camera number for remote on the IE browser “Address”. (For Example, the IP address is 123.45.123.9 Type in format is: vgtip://123.45.123.9/1) This will activate the Media Player to remote camera number 1. (vgtip://123.45.123.9/2 will activate the Media Player to remote camera number 2 and so on.)
- Before opening the images, a login name and password is required, this login name and password is the same to any of the user set in the Evertech program. The authorization and the setting of the user is also the same.
- Remote through IE browser will not need to activate EvertechServer program. Only IP address for the Evertech Server is required. However, this “Web camera service” function can only provide remote monitoring function, not remote recording function. If remote recording function is required, activated of the EvertechServer program is required.