

EV-WS232 2~32 CHANNEL VIDEO WEB SERVER**General Specifications**

- ▶ Compatible with most of CCTV Products; empower any video output device watching and controlling on the Internet or LAN
- ▶ Auto Network Reconnection (ANR)
- ▶ Upgrade firmware & AP from FTP site via Video Web Server
- ▶ Watch dog function supported
- ▶ Support Dynamic IP address
- ▶ 4 alarm inputs supported
- ▶ Duplex function, record and playback simultaneously at client site
- ▶ Auto e-mail warning system which will remind you if external alarm happened
- ▶ Intelligent non-stoppable recording function after ANR
- ▶ Multi AP screens supported
- ▶ Unique video player

Package Including

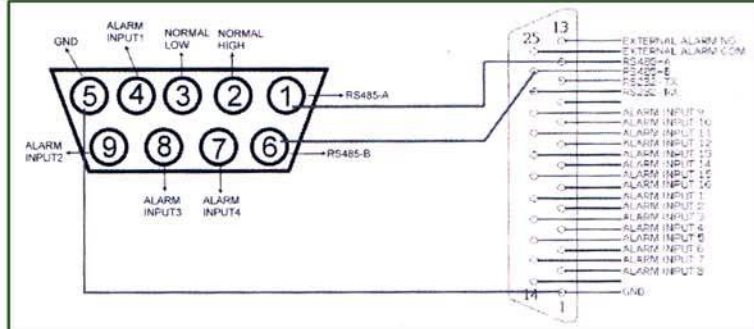
- ▶ Video Web Server
- ▶ User and Quick Start Manual
- ▶ I/O Port Connectors (DB9)
- ▶ Standart CAT5 Cable
- ▶ Adaptor

Product Characteristic

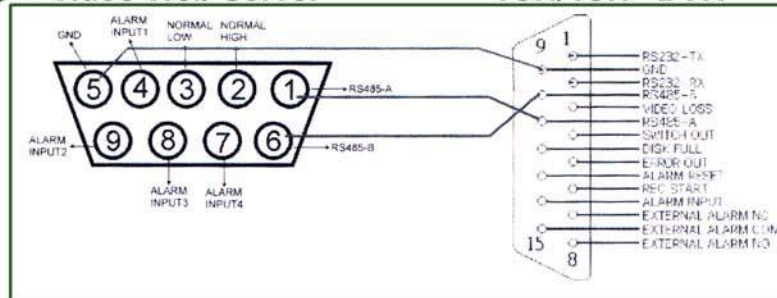
- ▶ **Video Input** : 2 Channel Analog & Digital 1 Vp-p 75 Ohm BNC
- ▶ **Alarm Input** : 4 Inputs
- ▶ **Watchdog** : Yes
- ▶ **RS-485 Port** : Yes
- ▶ **Network Interface** : Ethernet (10/100 Base-T)
- ▶ **Image Compress** : JPEG
- ▶ **Video Setup** : Color / Contrast / Brightness and Quality Adjustment.
- ▶ **Protocols** : TCP/IP, ICMP, SMTP
- ▶ **Hardware** : CPU : 32 Bits RISC, ROM : 4 Mb Flash, Ram : 16 Mb SDRAM, Ethernet : 10/100 Mbps, Bir RJ-45, LED' s for connexions status, GPIO for E-Mail Trigger.
- ▶ **Resulation** : VGA (640x480), CIF (320x240)
- ▶ **Performance** : Video : NTSC (15 Fps.), PAL (12,5 Fps.)
Network Performance : Max 3000 Kbits/sec.
- ▶ **Trigger & Action** : GPIO inputs trigger, Action : E-Mail address send data.
- ▶ **Setup** : IP adress to describe.
- ▶ **Software Update** : Local or Remote
- ▶ **Security** : Password Protection
- ▶ **Power** : 12V / 1,25A Adaptor

DVR Control

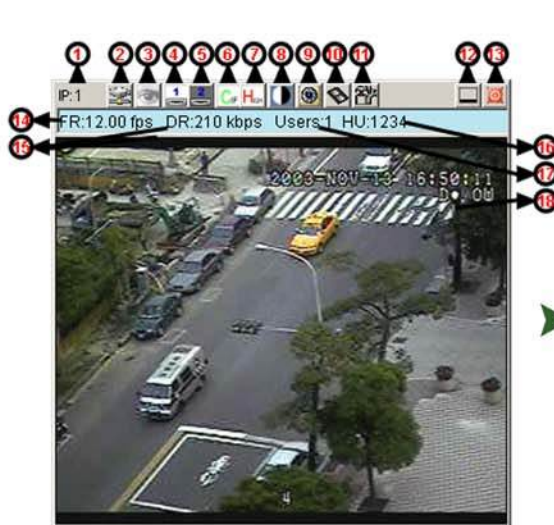
▶ Video Web Server 4CH/9CH/16CH DMR



▶ Video Web Server 1CH/4CH DVR

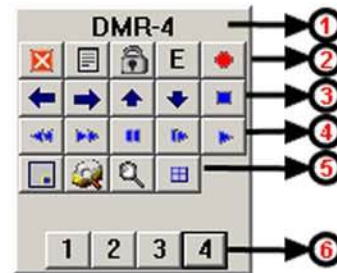


Software Features



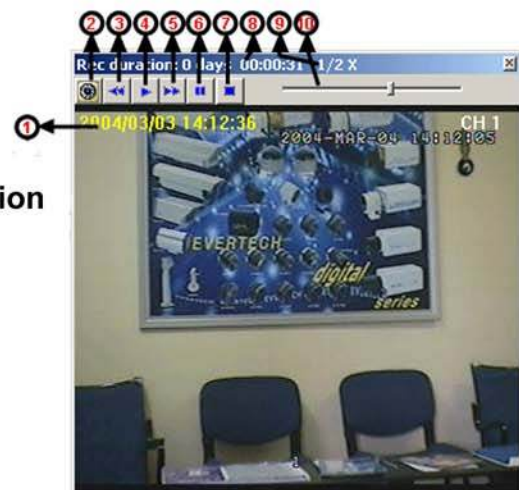
Work Interfaces

1. IP address, default setup 192.168.1.1
2. Connect / Disconnect
3. Hide Screen / Show Screen
4. Video Input 1
5. Video Input 2
6. Resulation: CIF / VGA
7. Image Quality: High / Middle / Low
8. Image Setup: Brightness / Contrast / Saturation
9. Snapshot
10. Record
11. System Setup
12. Minimized
13. Exit
14. Fps.
15. Data Route Speed
16. Online User Counter
17. User Name
18. Window Size Setup
(Mouse right click open menu select window size %100, %150, %200 and Full Screen.)



DMR Control Panel

1. Used Device
2. Quit, Menu, Lock, Enter and Record
3. Left, Right, Up, Down and Stop Record
4. Backward, Forward, Pause and Slowly
5. PIP, Search, Zoom and Quad
6. Video Input



Playback

1. OSD Screen
2. Snapshot
3. Slowly
4. Play
5. Quickly
6. Pause
7. Stop
8. Record Time
9. Run Functions
(1/8x, 1/4x, 1/2x, 1x, 2x, 4x, 8x)
10. Playback drag bar.